

Nautilus™ WM1.7-60

60 Amp Nautilus connector designed for applications with increased electrical current requirements

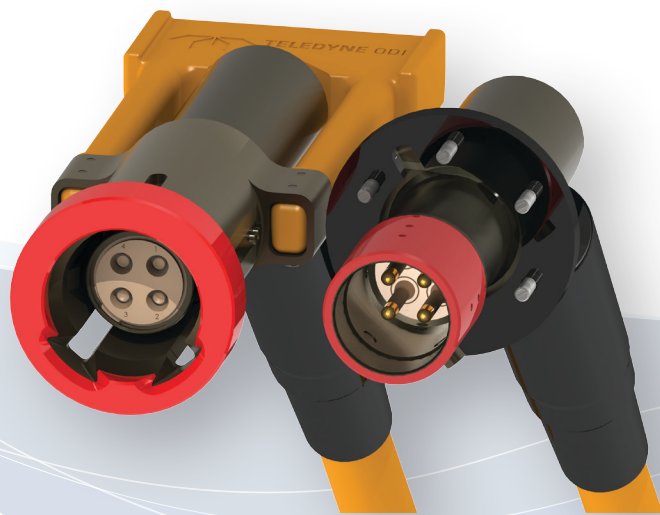
The new ODI 4-Way, Nautilus™ WM1.7-60 connector offers a solution to subsea systems requiring higher continuous electrical current. Common applications for the WM1.7-60 connector include electric heat-tracing systems, electric solenoids, small pumps, and magnetic bearings for compression pumps. ROV and Stab plate configurations are available.

The receptacle connectors feature pressure-balanced technology, and are designed for higher-temperature use (up to 104°F operational temperature).

The WM1.7-60 connector in ROV and Stab plate configurations are qualified to industry standards and customer specifications, including electrical performance, thermal shock, mechanical shock and vibration, helium leak, turbid conditions mating, and misaligned mating.

The WM1.7-60 features the patented, high-reliability Nautilus™ design with dual independent seals and oil reservoirs, providing two separate barriers. Each pin enters a reservoir via a shuttle pin and dual wiper seal assembly, designed to simultaneously clean and seal the pin from water or silt.

Over 191,000 Nautilus™ connectors have been delivered, accumulating more than 11 billion service hours.



4-Way Nautilus™ WM1.7-60 ROV Connectors

PRODUCT FEATURES

- Qualified
- 4-Way 60 Amp
- Operational Depth of 10,000 ft (3,000m)
- 25 year Design Life



TELEDYNE MARINE
Everywhere you look™

Nautilus™ WM1.7-60

60 Amp Nautilus connector designed for applications with increased electrical current requirements

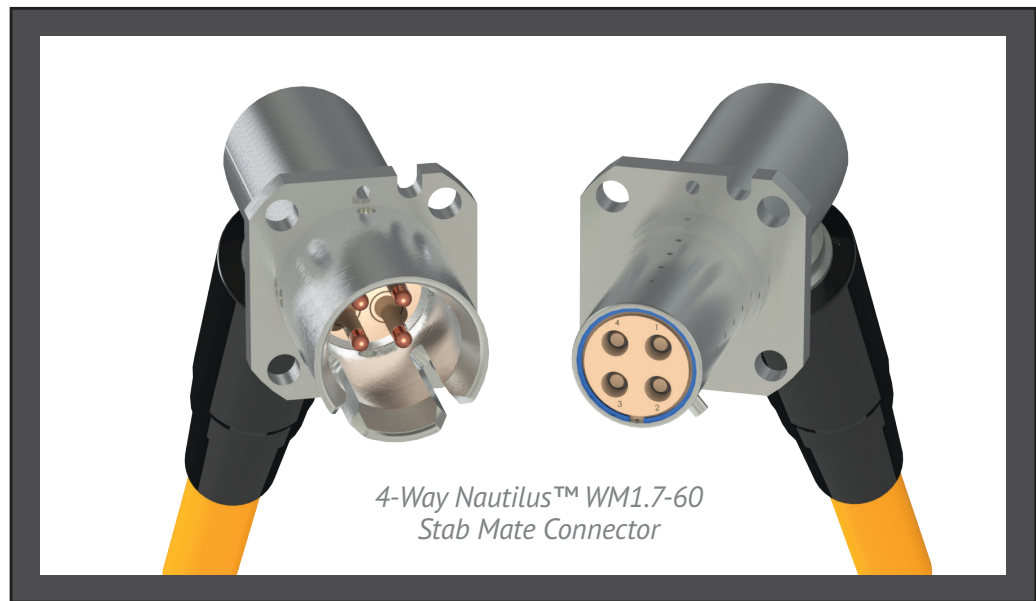


4-Way Nautilus™ WM1.7-60 ROV Connector

TECHNICAL SPECIFICATIONS

GENERAL SPECIFICATIONS	Operational Depth	10,000 ft (3,048 m)
	Operational Pressure	4,350 psi (300 Bar)
	Operational Temperature	23°F to 104°F (-5°C to 40°C)
	Storage Temperature	-13°F to +122°F (-25°C to 50°C)
	Subsea Mate/De-Mate Cycles	>100
	Mate/De-Mate Force	135 lbs (600 N)
	Configurations	ROV Mate & Stab Mate
	Material	ROV Mate: Titanium Stab Mate: Titanium or Stainless Steel
	Design Life	25 Years
	ELECTRICAL SPECIFICATIONS	Number of Circuits
Operational Voltage		1.0/1.7(2.0) kVAC
Operational Current		60 Amps @ <50°F (10°C)
Frequency		0-85 Hz

¹ For reference only, see FDS - DN 291496 for Official Values



4-Way Nautilus™ WM1.7-60 Stab Mate Connector