

Rolling Seal 8 - IV

Standard Wet-Mate Optical Connector with Up to 8 Circuits – ROV, Stab and Manual-Mate Configurations

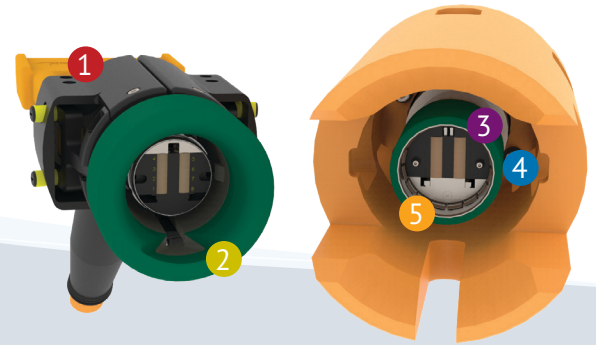
The evolutionary RS8 design features focus on enhancing operational efficiencies and reducing risks during ROV intervention where and when circumstances provide for less than optimal mating/demating conditions. Introduced in 1995, over 11,000 Rolling Seal connectors are in service across the globe. With a Mean-Time Between Failure (MTBF) of 7.3×10^7 hours, the 25-year reliability for the RS8 is over 99.7%.

The patented Rolling Seal design functions by excluding water and shuttling silt away from the region where the optical ferrules are brought into contact as the connectors are mated. As a result, a clean oil-filled conduit is created for the optical ferrules to connect. The result is a reliable low-loss optical throughput.

The RS8 MK IV generation builds upon the strong performance of the RS8 MK III, including product enhancements for increased robustness, and full qualification to API 17F v4 and SEAFOM TSD-02. The MK IV maintains backwards compatibility to the MK II and MK III generations.

PRODUCT FEATURES

- Suited for connectivity on subsea control modules, data transmission systems, umbilical terminations, and junction boxes
- Industry-standard fully wet-mateable, multi-channel optical/electrical hybrid connector
- Highly reliable and field-proven
- 30-year design life



8-Way Rolling Seal Connector (RS8)

Five Performance Enhancements

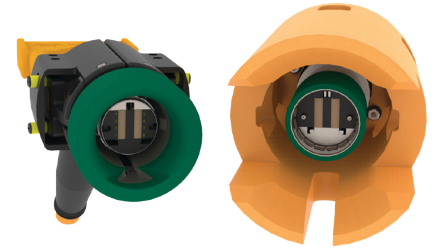
- 1 GAF/ELI ensures mating efficiency and eliminates potential for shell damage while offering positive latch indication.
- 2 Longer, contoured cable end lead-in bushing enhances fine alignment of connector halves during the mating sequence.
- 3 Bulkhead Center actuator material change offers increased margin against deformation, for improved overall field reliability.
- 4 Bulkhead main spring force increase assures manifold return even when mated at excessive angles.
- 5 Reinforced bulkhead bushing made more robust for ROV handling.



TELEDYNE MARINE
Everywhere you look™

Rolling Seal 8 - IV

Standard Wet-Mate Optical Connector with Up to 8 Circuits



TECHNICAL SPECIFICATIONS

GENERAL SPECIFICATIONS	Operational Temperature	32°F to +104°F (0°C to +40°C) (seawater) -4°F to +122°F (-18°C to +50°C) (air)
	Storage Temperature	-22°F to +140°F (-30°C to +60°C)
	Max Operational Pressure	10,000 psi pressure balanced
	Mate/De-mate Cycles	100 without refurbishment
	Mating Force	<120 lbs
	De-mating Force	<100 lbs
	Configurations	ROV, Stab, & Manual Mate
	Material	Titanium connector shells
	Design Life	30 Years
	OPTICAL SPECIFICATIONS	Number of Circuits
Insertion Loss		≤0.5 dB @ 1310/1550/1625 nm (single-mode) ≤1.0 dB @ 850/1300 nm (multi-mode)
Return Loss		≥30 dB per channel @ 1310/1550/1625 nm
Compliant to		API 17F v4, SEAFOM TSD-02

