

SubConn® HF Coax

75 ohm Coax

Connector specifications

Voltage rating on coax insert only	930 V, max nominal voltage acc. to MIL							
Frequency*	0.9 GHz	1.2 GHz	1.5 GHz	1.8 GHz	2.1 GHz	2.4 GHz	2.7 GHz	3.0 GHz
Attenuation*	6.3 dB	7.4 dB	8.6 dB	9.9 dB	11.3 dB	12.8 dB	14.5 dB	15.7 dB
Recommended max frequency	3.0 GHz							
Insulation resistance	> 200 Mohm							
Contact resistance	< 0.01 ohm							
Wet matings	N/A (dry mating only)							
Temperature rating (water)	- 4 to 60°C, 25 to 140°F							
Temperature rating (air)	- 40 to 60°C, - 40 to 140°F							
Storage temperature rating	- 40 to 60°C, - 40 to 140°F							
Qualified pressure tested	600 bar, 8,700 psi							

Material specifications

Connector body	Chloroprene rubber
Bulkhead body	Brass, stainless steel, titanium or anodised aluminium
Coax contacts	Gold plated contacts
O-rings	Nitrile
Locking sleeves	POM or stainless steel
Snap rings	Stainless steel AISI 302
Inline cable (2 ft, 60 cm)	PUR jacket cable with Mini-RG59 coax
Coax bulkhead leads (3.3 ft, 100 cm)	RG179 coax

Face view (male)



Nominal cable outside diameter (OD)

Mini-RG59 PUR cable 0.220", 5.59 mm

Additional information

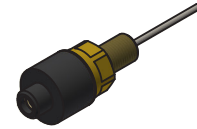
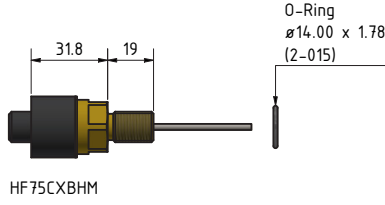
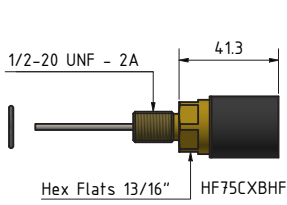
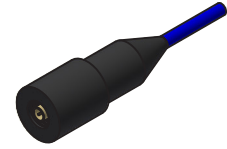
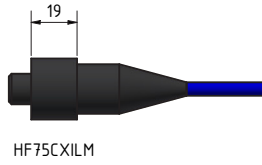
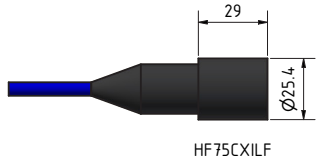
*All frequency and attenuation values are based on a 10 meter cable assembly test including 2 bulkhead connectors (75 ohm).
 BNC connector for RG179 coax leads use Amphenol 112133 or equivalent.
 BNC connector for Mini-RG59 coax cable use Belden 1855ABHD3 or equivalent.

SubConn® Coax connectors are dry mate only, and cannot take open face pressure.

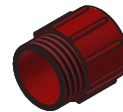
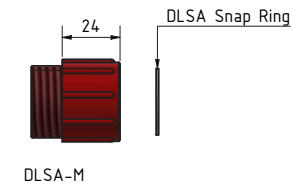
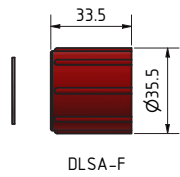
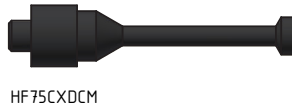
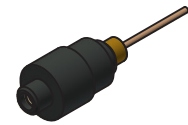
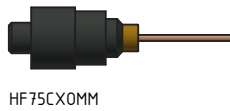
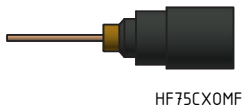
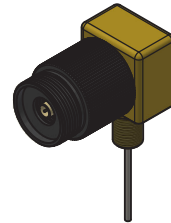
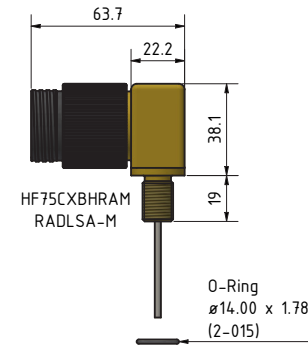
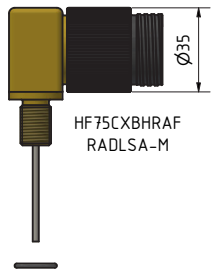
Locking sleeves are required. No greasing in the actual coax part.

Minimum bending radius on inline cable is 100 mm.

Recommended SMB termination for Coax, see pages 128-129



Note:
RA body are not available
in PEEK.
RADLSA-M locking sleeve
in colour black only
(female version not available)



Drawing information

Dimensions in mm (1 mm = 0.03937 inch)
Threads in inches (1 inch = 25.4 mm)