

SubConn® Micro Circular

21 contacts

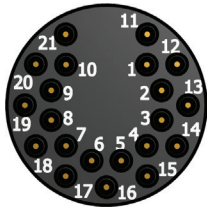
Connector specifications

Voltage rating	300 V DC/AC rms
Current rating	5 A per contact (max 40 A per connector)
Insulation resistance	> 200 Mohm
Contact resistance	< 0.01 ohm
Wet matings	> 500 (open face rated)
Temperature rating (water)	- 4 to 60°C, 25 to 140°F
Temperature rating (air)	- 40 to 60°C, - 40 to 140°F
Storage temperature rating	- 40 to 60°C, - 40 to 140°F
Qualified pressure tested	800 bar, 11,600 psi
Depth rating PEEK	300 bar, 4,350 psi

Material specifications

Connector body	Chloroprene rubber
Bulkhead body	Brass, stainless steel, titanium, anodised aluminium or PEEK
Contacts	Female sockets in gold plated brass UNS - C36000 Male pins in gold plated beryllium copper
O-rings	Nitrile
Locking sleeves	POM or stainless steel
Snap rings	Stainless steel AISI 302
Inline cable (2 ft, 60 cm)	20 AWG, 0.52 mm ² PUR
Bulkhead and PBOF leads (1 ft, 30 cm)	20 AWG, 0.52 mm ² white tagged PTFE
OM leads (3", 7 cm)	20 AWG, 0.52 mm ² white tagged PTFE

Face view (male)

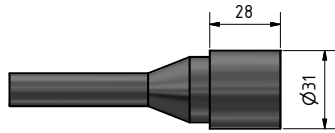


Inline cable colour code

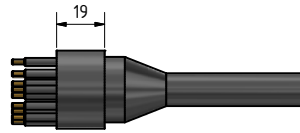
1 Grey	7 White/black	13 White/green	19 White/orange/black
2 Purple	8 White	14 White/blue	20 White/yellow/black
3 Blue	9 White/brown	15 White/purple	21 White/green/black
4 Green	10 White/red	16 White/grey	
5 Yellow	11 White/orange	17 White/brown/black	
6 Orange	12 White/yellow	18 White/red/black	

Nominal cable outside diameter (OD)

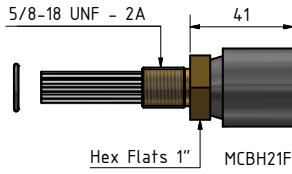
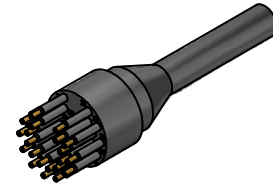
21 conductor cable 0.578", 14.70 mm



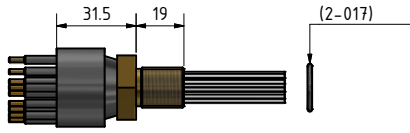
MCIL21F



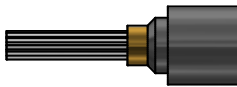
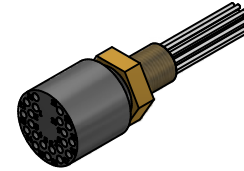
MCIL21M



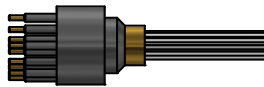
MCBH21F



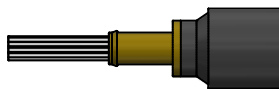
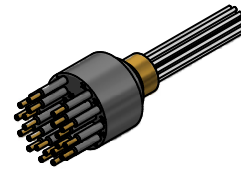
MCBH21M



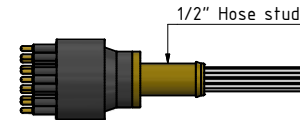
MCOM21F



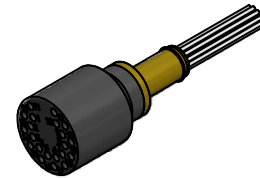
MCOM21M



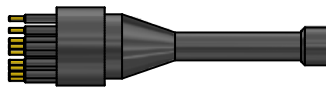
MCPB0F21F



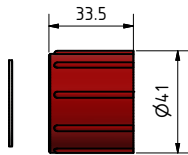
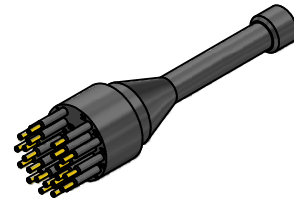
MCPB0F21M



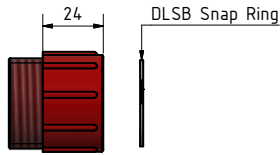
MDC021F



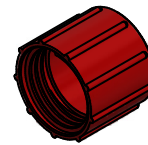
MDC021M



DLSB-F



DLSB-M



Drawing information

Dimensions in mm (1 mm = 0.03937 inch)
Threads in inches (1 inch = 25.4 mm)