

6205

SWATH BATHYMETRY & SIDE SCAN SONAR

FEATURES & BENEFITS

- Next generation MPES technology
- Unrivaled swath coverage in shallow water when compared to other single head systems
- Co-registered dual frequency side scan and bathymetry
- Superior multipath rejection
- IHO SP-44 Special Order compliant
- Swath sectors of up to 200°
- Equidistant and Equiangle output options
- Comes with EdgeTech's Discover Bathymetric Sonar Control Software

APPLICATIONS

- Shallow Water Hydrographic Surveys
- Benthic Habitat Mapping
- Nautical Charting
- Military Rapid Environmental Assessments (REA)
- Route Surveys
- Dredging Operations
- Marine Debris Search
- Port & Harbor Security

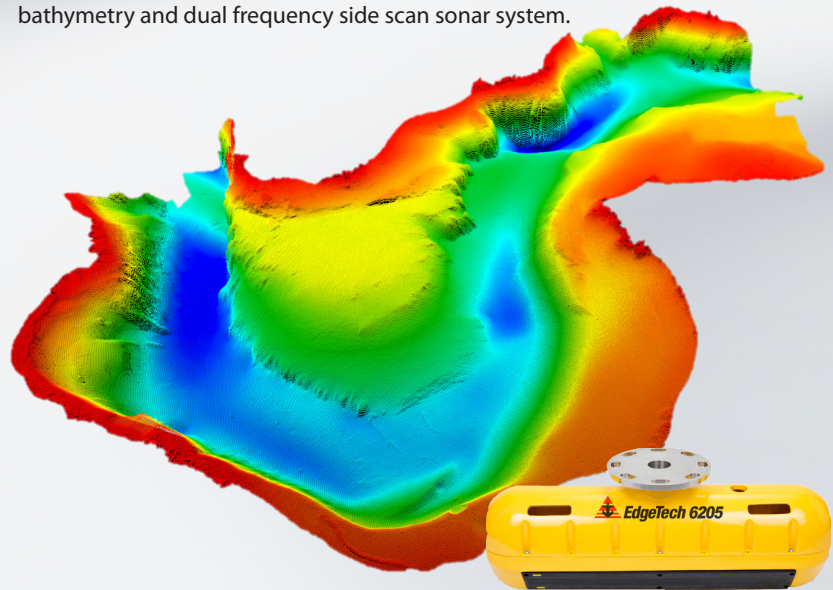
OPTIONS

The 6205 is available in several standard frequency configurations:

- 550 / 1600 kHz (Dual Frequency Side Scan with 550 kHz bathymetry data)
- 230 / 550 kHz (Dual Frequency Side Scan with 550 kHz bathymetry data)
- 230 / 550 kHz (Dual Frequency Side Scan with 230 kHz bathymetry data)

The modular design of the 6205 also allows for multi-frequency bathymetry options in a single sonar head. The field exchangeable array capability allows both shallow and deep water operations.

||| The EdgeTech 6205 produces real time, high resolution, three dimensional maps of the seafloor while providing an enhanced and fully integrated swath bathymetry and dual frequency side scan sonar system.



The 6205 uses EdgeTech's unique Multi Phase Echo Sounder (MPES) technology, or hybrid approach, to overcome the limitations of Multi Beam Echo Sounders (MBES) and Interferometric systems in shallow water by combining both beamforming and phase discrimination to determine each sounding along the seafloor. The 6205 also incorporates EdgeTech's Full Spectrum® technology to exceed IHO SP-44, NOAA and USACE specifications for feature detection and bathymetric point data uncertainty.

These two technologies enable the 6205 to produce a wider and cleaner swath (over 200°) to complete surveys faster and safer by providing superior coverage, rejection of multipath effects, reverberation, and acoustic noise commonly encountered in the shallow water environment.

In addition, the 6205 utilizes EdgeTech's latest 2205 electronics and modular arrays resulting in an extremely lightweight design required for shallow water applications and vessels of opportunity.

The standard configuration for the 6205 includes an integrated sound velocity sensor and interfaces with standard GPS, MRU, SVP, Gyros, INS, etc.

The 6205 also interfaces to most third party acquisition and processing software packages as well.

For more information please visit EdgeTech.com

info@EdgeTech.com | USA 1.508.291.0057

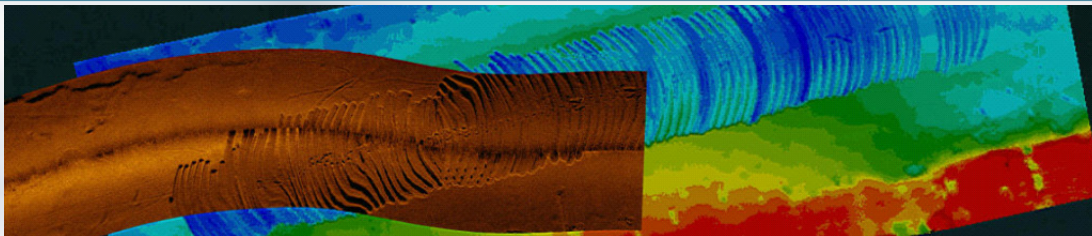
6205

SWATH BATHYMETRY & SIDE SCAN SONAR

KEY SPECIFICATIONS

BATHYMETRY			
Sonar Frequency	230 kHz	550 kHz	
Beamwidths*	1° x 0.7°	1° x 0.5°	
Max Sounding Depth**	225 m	120 m	
Max Swath Width***	400 m	200 m	
Max Swath Sector	200°		
Max Number of Soundings	800		
Sounding Patterns	Equidistant and Equiangular		
SIDE SCAN SONAR IMAGERY			
Frequency	230 kHz	550 kHz	1600 kHz
Horizontal Beamwidth (2-way)	0.54°	0.36°	0.20°
Range Resolution	30 mm	10 mm	6 mm
Max Range**	250 m	150 m	35 m
SYSTEM			
Pulse Modulation	CW & FM CHIRP		
Ping Rate (Range Dependent)	Up to 60 Hz		
Construction	FRP Composite / Stainless Steel Reinforced		
Dimensions	150 x 211 x 762 mm		
Deck Cable Length	20m (Standard)		
Depth Rating	50 m		
Weight (In Air)	19.9 kg (44 lbs)		
Input Voltage	48-60 VDC, 115-230VAC		
Power (Typical /Max)	55W / 70W		
Software	Windows based software included EdgeTech's Discover Bathymetric Acquisition and Sonar Control		
Data Products	Bathymetry, Backscatter and Side Scan Imagery, and Real Time Uncertainties		

* Across track resolution expressed as a beamwidth at nadir
 ** Dependent on environmental conditions (i.e. absorption, reverberation, sea noise, etc.)
 *** Assumes a flat seafloor and dependent on environmental conditions



For more information please visit EdgeTech.com

info@EdgeTech.com | USA 1.508.291.0057