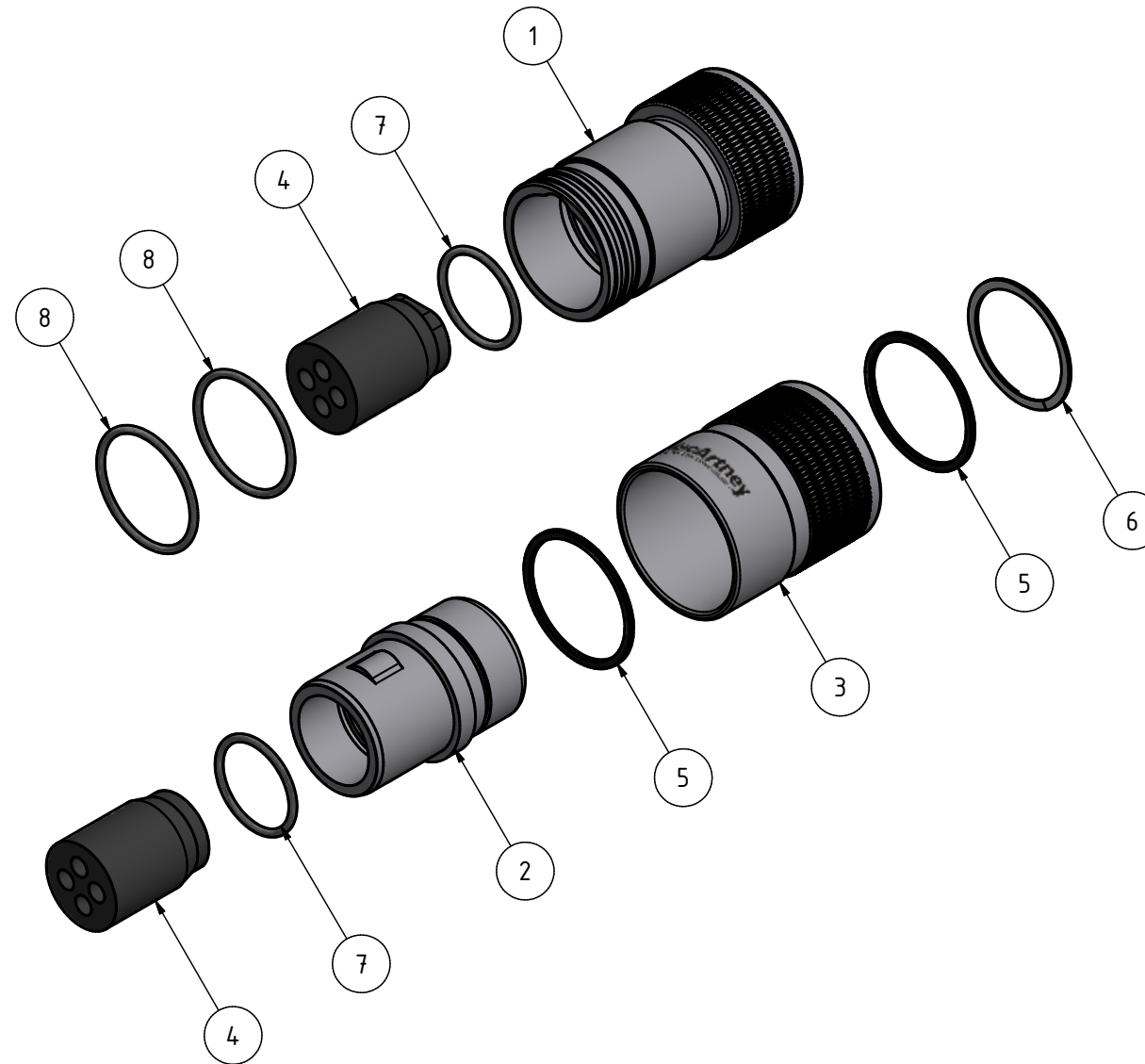


# TrustLink Metal Shell Connector

Pressure Cap M/F  
- assembly instruction



**MacArtney**  
UNDERWATER TECHNOLOGY

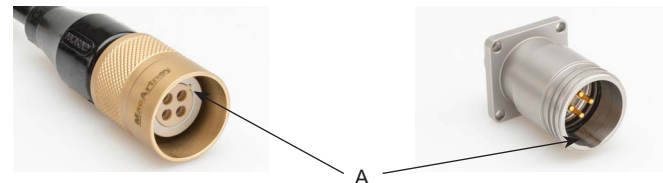
**Important:**  
Male connectors shall not be energised while unmated.  
Energising in unmated condition causes a significant health risk due to electrical shock or short circuit due to the potential risk of flashover pin to pin or pin to housing.

	Pressure cap M/F	Insert	O-ring kit for Pressure cap M/F	
SA 04 Pin	1) Male Pressure Cap 0024730601-031	4) Insert 0024730611-005	Kit no.: 100007054	5) Washer 0015730011-008 6) Snap ring 02801324 7) O-ring 08350109 (ø17.5x1.5 FPM75) 8) O-ring 08350112 (ø22.5x1.5 FPM75)
SA 08 Pin	2) Female pressure Cap 0024730601-025	4) Insert 0024730611-006		
SA 12 Pin	3) Locking sleeve AISI316 0024730601-003 3) Locking sleeve Alu br. 023-10117488	4) Insert 0024730611-002		
SB 16 Pin	1) Male Pressure Cap 0024730601-033	4) Insert 0024730611-003	Kit no.: 100007055	5) Washer 0015730011-008 6) Snap ring 02801324 7) O-ring 08350110 (ø18.5x1.5 FPM75) 8) O-ring 08350112 (ø22.5x1.5 FPM75)
SB 19 Pin	2) Female pressure Cap 0024730601-026 3) Locking sleeve AISI316 0024730601-018 3) Locking sleeve Alu br. 023-10117489	4) Insert 0024730611-007		
SC 26 Pin	1) Male Pressure Cap 0024730601-034	4) Insert 0024730611-004	Kit no.: 100007056	5) Washer 0015730011-004 6) Snap ring 02801325 7) O-ring 08350112 (ø22.5x1.5 FPM75) 8) O-ring 08350113 (ø27.0x1.5 FPM75)
SC 37 Pin	2) Female pressure Cap 0024730601-024 3) Locking sleeve AISI316 0024730601-023 3) Locking sleeve Alu br. 0024730601-038	4) Insert 0024730611-001		

# TrustLink Metal Shell Connectors Handling instructions

Follow these instructions carefully to ensure correct use of your TrustLink connector.

## Assembly

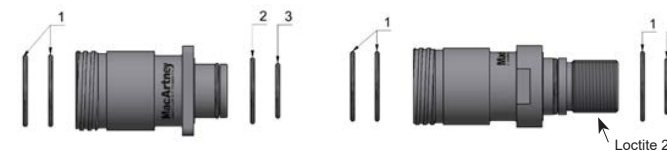


### TrustLink CCP to FCR, BCR receptacle

- Step 1: Inspect the connector metal parts and O-rings for contamination. Grease the O-rings with Molykote 111
- Step 2: Inspect the connector insert. If the connector insert is contaminated, follow the TrustLink MS maintenance
- Step 3: Visually align the key way on the CCP connector with the key pin tip on the receptacle **before** mating (illustration A)
- Step 4: Push to mate the connector, whilst turning the locking sleeve
- Step 5: The locking sleeve must be hand tightened only

## Maintenance

- If the connector insert or O-rings are contaminated. Cleaning and removal of any accumulated contamination on a connector, should be performed by using spray based contact cleaner (isopropyl alcohol)
- Repeat the cleaning process if necessary
- O-rings item 1, 2, 3, 4 must be checked before mating/mounting and will require replacing if they show signs of damage
- Sizes of O-rings can be found in the assembly instructions on our webpage



- Always grease O-rings with Molykote 111
- For securing the BCR connectors and nut, the use of Loctite 243 is recommended (Loctite 243 or equivalent) If the torque is less as recommended, always use Loctite 243
- Be careful not to get the Loctite on the O-rings

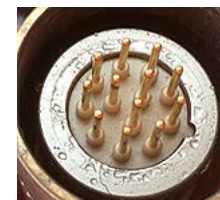
## Recommended torque on Bulkhead TrustLink MS (Loctite 243 applied)

Type	Material	Rec. Torque – Nm
3/4" - 20 UNF	Stainless steel, brass	52 ± 2
7/8" - 20 UNF	Stainless steel, brass	71 ± 2
1" - 20 UNF	Stainless steel, brass	92 ± 2

The TrustLink Metal Shell series is rated to 600 bar mated.

## NOTE:

When dismantling the CCP, vacuum may accrue in the connector. It can cause water from above the O-rings, to migrate in to the connection area. If that accrues, run the maintenance instruction.



**MacArtney**  
UNDERWATER TECHNOLOGY

**TrustLink**  
Metal Shell Connectors

