

SubConn® Ethernet Circular Double O-ring 8 and 13 contacts

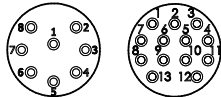
Connector specifications

| | |
|------------------------------|---|
| Voltage rating | 600 V DC/AC rms (13 contacts only) |
| Voltage rating on data wire | 250 V DC/AC rms |
| Current rating on power wire | 4 A per contact (max 16 A per connector) (13 contacts only) |
| Data rate | 1 Gbit/s |
| Insulation resistance | > 200 MΩ |
| Contact resistance | < 0.01 Ω |
| Wet matings | > 500 |
| Temperature rating (water) | - 4 to 60°C, 25 to 140°F |
| Temperature rating (air) | - 40 to 60°C, - 40 to 140°F |
| Storage temperature rating | - 40 to 60°C, - 40 to 140°F |
| Qualified pressure tested | 600 bar, 8,700 psi (open face) |

Material specifications

| | |
|---------------------------------|--|
| Connector body | Chloroprene rubber |
| Bulkhead body | Brass, stainless steel, titanium, anodised aluminium |
| Contacts | Female sockets in gold plated brass UNS - C36000 Male contacts in gold plated beryllium copper |
| O-rings | Nitrile |
| Locking sleeves | POM or stainless steel |
| Snap rings | Stainless steel AISI 302 |
| Bulkhead leads (3.3 ft, 100 cm) | CAT 5E patch cable, 5 x 20 AWG, 0.52 mm ² coloured PTFE (13 contacts only) incl. RJ 45 connector (not installed) |

Face view (male)



Leads colour code - 8 contacts

| | |
|-------------------------|---------------------------|
| 1-2 Brown, Brown/white* | 5-6 Orange, Orange/white* |
| 3-4 Blue, Blue/white* | 7-8 Green, Green/white* |

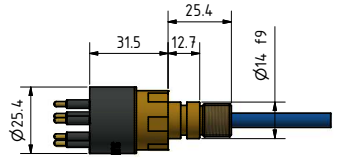
Leads colour code - 13 contacts

| | | |
|------------------------------------|---------------------------|---------------------------|
| 1 Black | 4-5 Brown, Brown/white* | 10-11 Green, Green/white* |
| 2 Screen (orange wire on bulkhead) | 6-7 Blue, Blue/white* | 12 Red |
| 3 White | 8-9 Orange, Orange/white* | 13 Green |

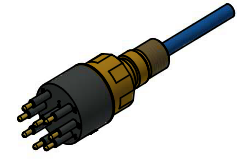
* Twisted pairs



DIL8F
DOM8F
DPB0F8F
DCC8F



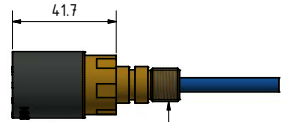
DBH8M 2 0-Ring
Hex Flats 22mm



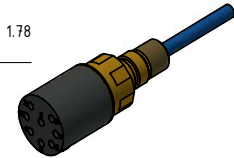
0-Ring
ø10.82 x 1.78
(2-013)



DIL8M
DOM8M
DPB0F8M
DCC8M



DBH8F 2 0-Ring
Hex Flats 22mm



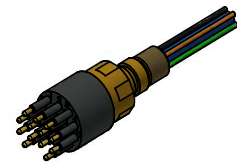
0-Ring
ø15.6 x 1.78
(2-016)



DIL13F
DOM13F
DPB0F13F
DCC13F



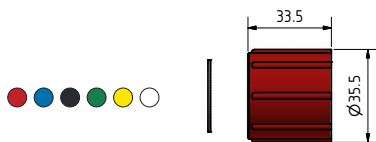
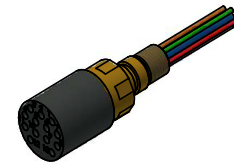
DBH13M 2 0-Ring
Hex Flats 22mm



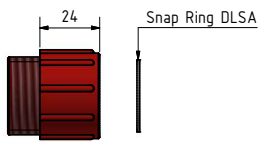
DIL13M
DOM13M
DPB0F13M
DCC13M



DBH13F 2 0-Ring
Hex Flats 22mm



DLSA-F



DLSA-M



Snap Ring DLSA

Drawing information

Dimensions in mm (1 mm = 0.03937 inches)
Threads in inches (1 inch = 25.4 mm)