

# SubConn® Metal Shell 1500

## 2, 3 and 4 contacts

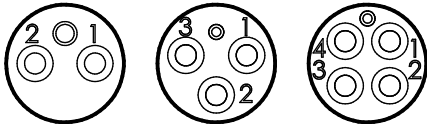
### Connector specifications

Voltage rating	300 V DC/AC rms
2, 3 and 4 contacts current rating	10 A per contact (max 20 A per connector)
Insulation resistance	> 200 MΩ
Contact resistance	< 0.01 Ω
Wet matings	> 500
Temperature rating (water)	- 4 to 60°C, 25 to 140°F
Temperature rating (air)	- 40 to 60°C, - 40 to 140°F
Storage temperature rating	- 40 to 60°C, - 40 to 140°F
Qualified pressure tested	1,400 bar, 20,300 psi (mated) 800 bar, 11,600 psi (open face)

### Material specifications

Connector body	Chloroprene rubber
Connector housing	Stainless steel AISI 316 (other materials on request)
Contacts	Female sockets in gold plated brass UNS - C36000 Male contacts in gold plated beryllium copper
Location pin	Stainless steel AISI 303
Locking sleeves	ABS or stainless steel
Snap rings	Stainless steel AISI 302
2, 3 and 4 contact bulkhead leads (1 ft, 30 cm)	20 AWG, 0.52 mm <sup>2</sup> coloured PTFE

### Face view (male)

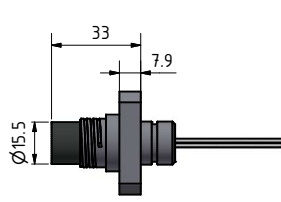


### Leads colour code

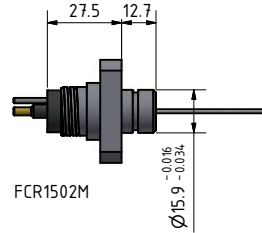
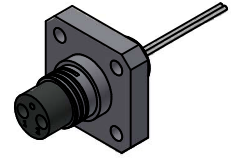
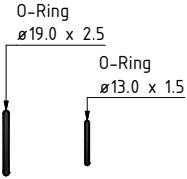
1 Black	3 Red
2 White	4 Green



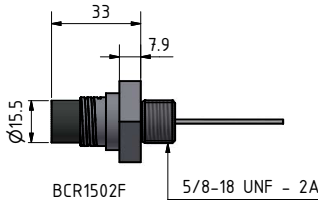
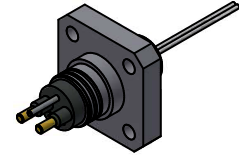
MCIL2F  
MCOM2F  
MCPBOF2F  
MCDC2F



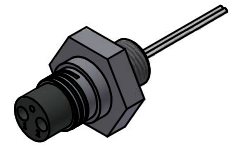
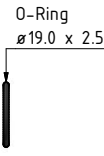
FCR1502F



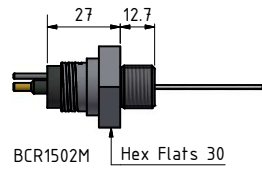
FCR1502M



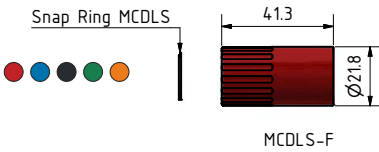
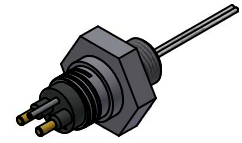
BCR1502F



MCIL2M  
MCOM2M  
MCPBOF2M  
MCDC2M



BCR1502M



**Drawing information**

Dimensions in mm (1 mm = 0.03937 inches)  
Threads in inches (1 inch = 25.4 mm)