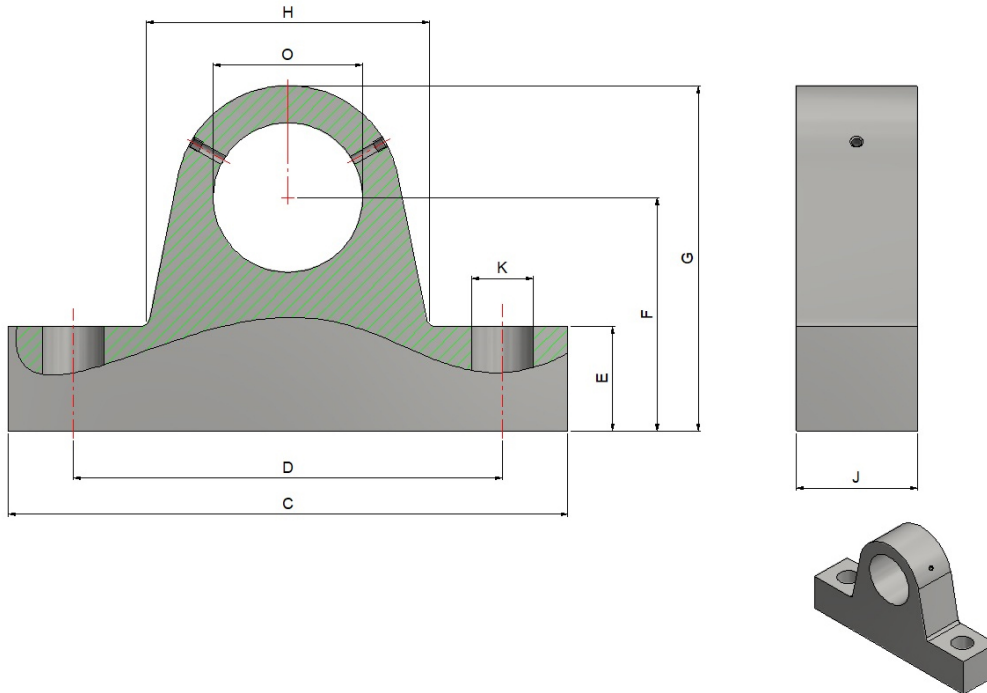


# Trunnion Brackets



## Specifications

Type	Ø O f7	C	D ± 0,4	E	F ± 0,15	G	H	J	Ø K
TBM 10 Steel	10	55	44	11	22	31	19	11	6,5
TBM 15 Steel	15	76	50	25	40	53	24	20	11
TBM 17 Steel	17	76	50	25	40	53	24	20	11
TBM 20 Steel	20	86	60	27	45	63	37	20	11
TBM 25 Steel	25	110	80	35	55	77	54	24	14
TBM 30 Steel	30	150	110	39	65	92	65	30	18
TBM 35 Steel	35	150	110	39	65	92	65	30	18
TBM 40 Steel	40	170	125	44	76	112	82	30	22
TBM 45 Steel	45	170	125	44	76	112	82	30	22
TBM 50 Steel	50	170	125	44	76	112	82	30	22
TBM 60 Steel	60	260	200	70	112	168	140	50	33
TBM 63 Steel	63	260	200	70	112	168	140	50	33
TBM 70 Steel	70	300	230	56	125	185	150	65	33
TBM 80 Steel	80	300	230	56	125	185	150	65	33
TBM 90 Steel	90	394	324	110	160	250	212	80	39
TBM 100 Steel	100	394	324	110	160	250	212	80	39
TBM 110 Steel	110	394	324	110	160	250	212	80	39

All measurements in millimetres (mm) unless otherwise quoted.