

# SubConn® Micro Circular

## 21 contacts

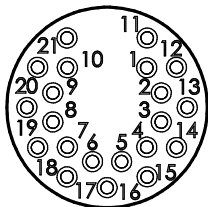
### Connector specifications

Voltage rating	300 V DC/AC rms
Current rating	5 A per contact (max 40 A per connector)
Insulation resistance	> 200 MΩ
Contact resistance	< 0.01 Ω
Wet matings	> 500
Temperature rating (water)	- 4 to 60°C, 25 to 140°F
Temperature rating (air)	- 40 to 60°C, - 40 to 140°F
Storage temperature rating	- 40 to 60°C, - 40 to 140°F
Qualified pressure tested	1,400 bar, 20,300 psi (mated) 800 bar, 11,600 psi (open face)
Depth rating PEEK	300 bar, 4,350 psi

### Material specifications

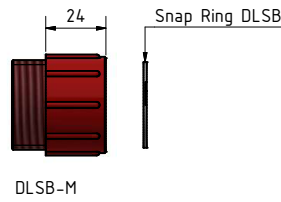
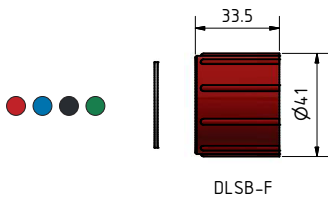
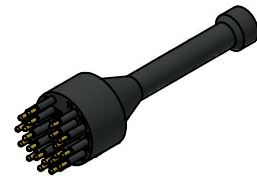
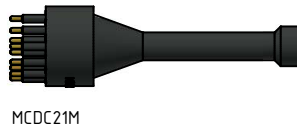
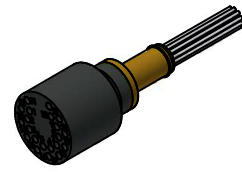
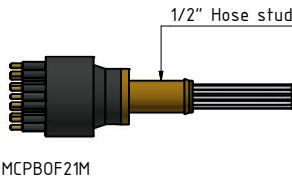
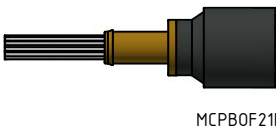
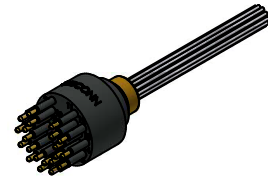
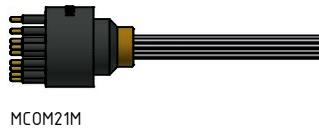
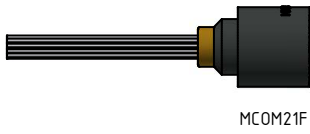
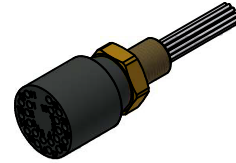
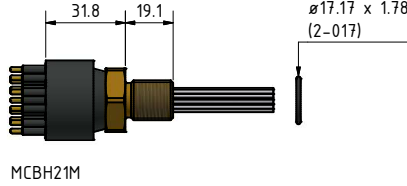
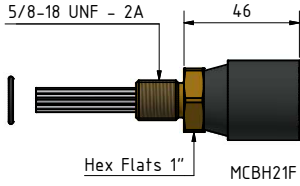
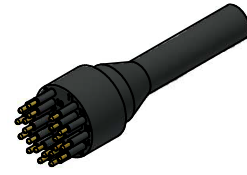
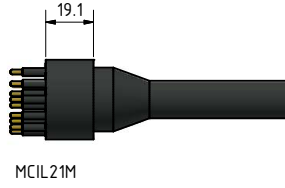
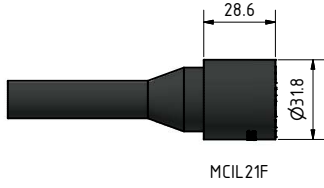
Connector body	Chloroprene rubber
Bulkhead body	Brass, stainless steel, titanium, anodised aluminium or PEEK
Contacts	Female sockets in gold plated brass UNS - C36000 Male contacts in gold plated beryllium copper
O-rings	Nitrile
Locking sleeves	POM or stainless steel
Snap rings	Stainless steel AISI 302
Inline cable (2 ft, 60 cm)	20 AWG, 0.52 mm <sup>2</sup> PUR
Bulkhead and PBOF leads (1 ft, 30 cm)	20 AWG, 0.52 mm <sup>2</sup> white tagged PTFE
OM leads (3", 7 cm)	20 AWG, 0.52 mm <sup>2</sup> white tagged PTFE

### Face view (male)



### Inline cable colour code

1 Grey	7 White/black	13 White/green	19 White/orange/black
2 Purple	8 White	14 White/blue	20 White/yellow/black
3 Blue	9 White/brown	15 White/purple	21 White/green/black
4 Green	10 White/red	16 White/grey	
5 Yellow	11 White/orange	17 White/brown/black	
6 Orange	12 White/yellow	18 White/red/black	



**Drawing information**

Dimensions in mm (1 mm = 0.03937 inches)  
Threads in inches (1 inch = 25.4 mm)